

SUPPLIER MANAGEMENT PACKAGE SOLUTION.

**EASY ACCESS TO THE
WORLD OF PROCESS
AUTOMATION WITH
LOBSTER_PRO.**



Lobster

A photograph of three people (two men and one woman) standing against a green background, holding a long pink ribbon that stretches across the top of the frame. They are all smiling and looking upwards. The man on the left is wearing a dark blue t-shirt. The man in the center is wearing a blue and white patterned short-sleeved shirt. The woman on the right is wearing a black t-shirt. The word 'CONTENT' is written in bold black letters inside a white rounded rectangle, which is circled in green.

CONTENT

3. LOBSTER_PRO IN SHORT. COMPREHENSIVE. INTUITIVE. FAST.

4. LOBSTER_PRO PACKAGE SOLUTION SUPPLIER MANAGEMENT.

6. FLEXIBILITY AS STANDARD.

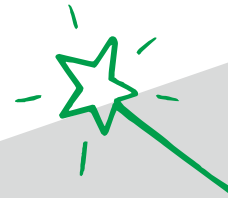
8. THE FULL VERSION OF LOBSTER_PRO.

Lobster_pro is a highly versatile, configurable software with a tailored approach to supporting operational processes. Avoid media disruptions. Connect your partners seamlessly. Focus on your core processes. Configure rather than program. All thanks to state-of-the-art no-code technology.

DIGITALISATION & AUTOMATION OF BUSINESS PROCESSES.

LOBSTER_PRO IN SHORT. COMPREHENSIVE. INTUITIVE. FAST.

Lobster_pro's business integration power enables customers to shape business processes, seamlessly connect external and in-house systems, and orchestrate operational procedures. Giving companies 24/7 transparency and an unparalleled overview of their systems whilst also unlocking seamless data transmission without any media breaks. But it doesn't stop there. The software also keeps an eye on all processes, informing those responsible only if the data deviates from what is expected. Amendments are targeted and resource efficient. So the focus never strays from core business operations. In short: Lobster_pro – with the help of middleware solution Lobster_data – allows users to digitalise and automate all operational processes. Paving the way for process optimisation!



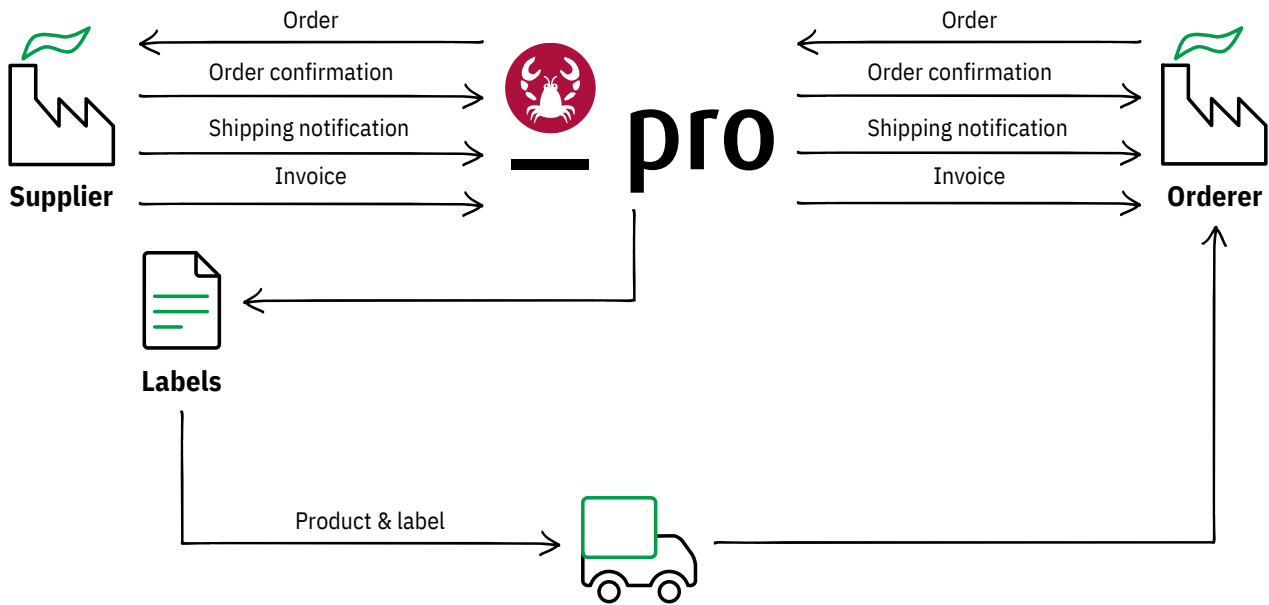
START SMALL. THINK BIG.

LOBSTER_PRO SUPPLIER MANAGEMENT PACKAGE SOLUTION.

The Lobster_pro Supplier Management package solution enables highly effective, transparent collaboration between all suppliers. Tailored to your and your partners' current IT structure, the interchange takes place via convenient web-based EDI portals or direct EDI/Webservices integrations.

SCOPE OF FEATURES:

- Import orders (POs) from the customer's ERP system. The interface is created using the underlying integration tool Lobster_data
- Approve orders for suppliers – automated in Lobster_pro or manually by the customer as the Control Centre
- Attach order documents such as technical specifications
- Gain a comprehensive overview of order statuses (Taskboard logic)
- Enable supplier-initiated order confirmations
 - Use 1-click functionality
 - Log deviating quantities and dates if required
 - Split ordering position (partial deliveries)
- Export confirmations to the customer's ERP system
- Define delivery tolerances – general or supplier-specific
- Manage deviations based on set tolerances
- Trigger timely, automated alerts to those responsible
- Notify selected partners via email
- Allow suppliers to generate shipping notifications to customers
- Enable suppliers to transmit shipping notifications to predefined logistics partners
- Create PDF delivery notes plus convenient print feature via the online account
- Support drop shipments



The following standardised options are available in addition to this package solution:

- Self-onboarding for suppliers (web)
- Manual order entry for customers

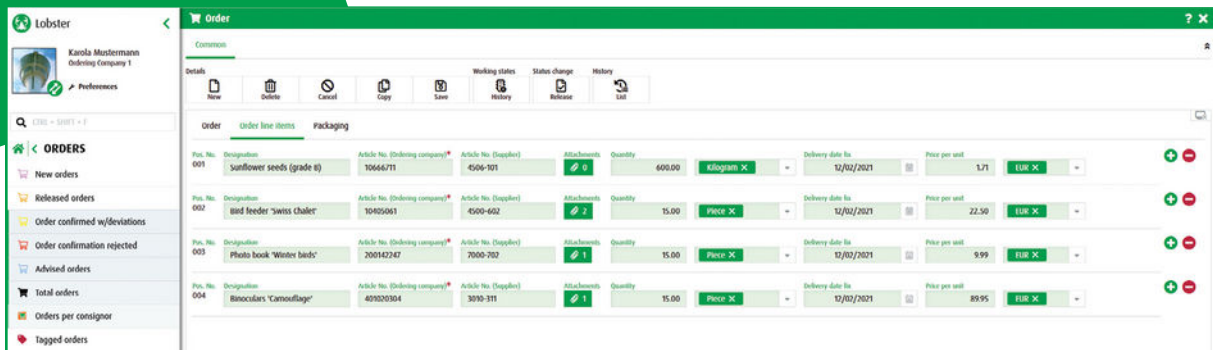
Additional options over and above the package solution:

- Support for invoicing with suppliers (credit notes)
- Label printing on request
- Time slot management
- Report generation/cockpit feature
- Track & trace
- Warehouse insights (WMS connection)
- Advanced: Self-onboarding for EDI suppliers



A BEHIND THE SCENES LOOK. AT SUPPLIER MANAGEMENT.

FLEXIBILITY AS STANDARD.

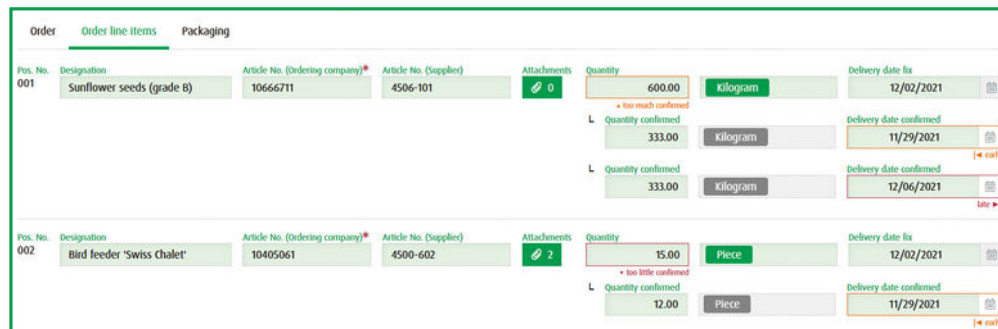


The screenshot shows the 'Order' interface in the Lobster system. The left sidebar contains navigation options like 'ORDERS', 'New orders', 'Released orders', etc. The main area displays a table of order line items with columns for Pos. No., Designation, Article No. (Ordering company), Article No. (Supplier), Attachments, Quantity, Delivery date fix, and Price per unit. A green arrow points from the caption below to the 'Order line items' tab.

Pos. No.	Designation	Article No. (Ordering company)	Article No. (Supplier)	Attachments	Quantity	Delivery date fix	Price per unit
001	Sunflower seeds (grade 8)	10666711	4506-101	0	600.00	12/02/2021	1.71
002	Bird feeder 'Swiss chalet'	10405061	4500-602	2	15.00	12/02/2021	22.50
003	Photo book 'Winter birds'	700542747	7000-202	1	15.00	12/02/2021	9.99
004	Binoculars 'Camouflage'	40202104	3010-311	1	15.00	12/02/2021	89.95

Screenshot of a newly received order
incl. ordering position

Under ordering position: Supplier approves
quantity and delivery date.



This detailed view shows the 'Order line items' section. The first item, 'Sunflower seeds (grade 8)', has a quantity of 600.00 and a delivery date of 12/02/2021. Below the main row, there are two 'Quantity confirmed' rows: one for 333.00 with a delivery date of 11/29/2021, and another for 333.00 with a delivery date of 12/06/2021. The second item, 'Bird feeder 'Swiss chalet'', has a quantity of 15.00 and a delivery date of 12/02/2021. Below it, there is one 'Quantity confirmed' row for 12.00 with a delivery date of 11/29/2021. A green arrow points from the caption above to the first item's row.

Pos. No.	Designation	Article No. (Ordering company)	Article No. (Supplier)	Attachments	Quantity	Delivery date fix
001	Sunflower seeds (grade 8)	10666711	4506-101	0	600.00	12/02/2021
					333.00	11/29/2021
					333.00	12/06/2021
002	Bird feeder 'Swiss chalet'	10405061	4500-602	2	15.00	12/02/2021
					12.00	11/29/2021

Total orders

Common

Details

New Delete Edit Cancel Clear Search Filter and sorting Working states Tag Add Remove List

Order No.	Orderer	Consignee	Consignor	Tag	Working state	Document	Number of packages
100002*							
<input type="checkbox"/>	1000029	54 - Ordering Company 1 - Vor...	54 - Ordering Company 1 - V...	53 - Supplier A - Nürnberger Str. 4 - ...	!!!	New	0 1
<input type="checkbox"/>	1000027	54 - Ordering Company 1 - Vor...	54 - Ordering Company 1 - V...	53 - Supplier A - Nürnberger Str. 4 - ...	!!!	New	0 1
<input checked="" type="checkbox"/>	1000026	54 - Ordering Company 1 - Vor...	54 - Ordering Company 1 - V...	53 - Supplier A - Nürnberger Str. 4 - ...		Confirmed	0 1
<input type="checkbox"/>	1000025	54 - Ordering Company 1 - Vor...	54 - Ordering Company 1 - V...	53 - Supplier A - Nürnberger Str. 4 - ...		Advised	0 1
<input type="checkbox"/>	1000024	54 - Ordering Company 1 - Vor...	54 - Ordering Company 1 - V...	53 - Supplier A - Nürnberger Str. 4 - ...		Advised	2 1
<input type="checkbox"/>	1000023	75 - Ordering Company 3 - Bo...	75 - Ordering Company 3 - B...	68 - Lieferant C - Rheinstr. 83 - Chur -	???	Partially advised	3 2

Order overview (list view).

Orders per consignor

Common Export Preferences Administration

Order No. 1* Consignee 3 selected X Working state 2 selected X

Supplier A (2)

Order No. 1000034
Consignee
Confirmation with deviations
Earliest delivery date 04/30/2022

Order No. 1000012
Consignee Headquarter
Confirmation rejected
Earliest delivery date 04/15/2022

Supplier B (3)

Order No. 1000018
Consignee Headquarter
Confirmation with deviations
Earliest delivery date 04/15/2022

Order No. 1000017
Consignee
Confirmation with deviations
Earliest delivery date 04/07/2022

Order No. 1000015
Consignee
Confirmation with deviations
Earliest delivery date 04/15/2022

Supplier C (1)

Order No. 1000030
Consignee Headquarter
Confirmation with deviations
Earliest delivery date 05/01/2022

Order overview in the Control Centre (grid view, sorted by supplier).

The package solution uses a HTML5-based client that is compatible with all current browsers. Access all features in high resolution across all touch devices.

Example: PDF print version of a delivery note.

Delivery Note Page: 1 / 1

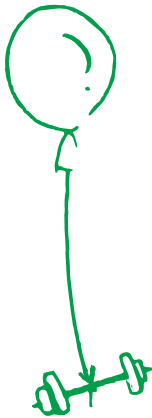
Delivery note number: 105

Consignee	Consignor	Freight forwarder
Ordering Company 1 Vorderbühl 13 4881 Kronberg	Supplier A Nürnberger Str. 4 86156 Augsburg	Forwarder A Industrieweg 247 2850 Boom

1	10866711	800.0	
2	10405061	15.0	

NEXT UP: YOUR DIGITAL TRANSFORMATION

WITH THE FULL VERSION OF LOBSTER_PRO.



The Supplier Management package solution allows users to map all supplier-related order processes, laying the foundation for more in-depth automation with Lobster_pro. The full version of our software can, of course, do so much more. Scale your custom solution step by step. And open up a world of possibilities. With Lobster_pro.



Lobster

Lobster PRO GmbH

info.pro@lobster.de

lobster-world.com/da

lobster-world.com/se

