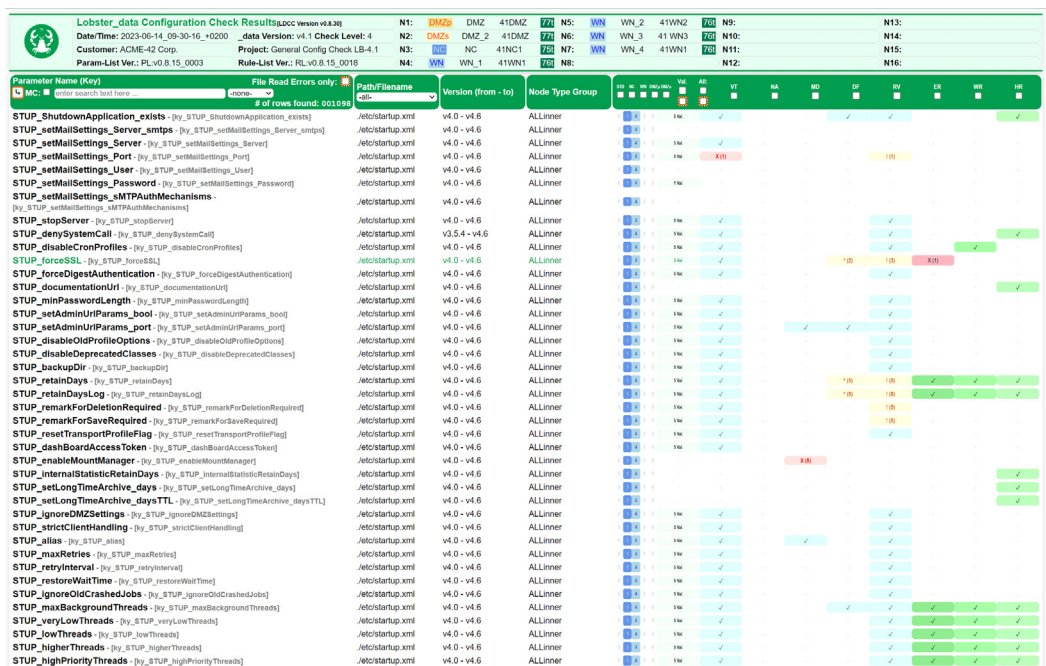


CHECK IT OUT.

THE CONFIGURATION CHECK FOR LOBSTER_DATA.

The Configuration Check for Lobster_data is a service for analysing the many configuration settings within a Lobster_data system to ensure they adhere to certain standards, best practices and individual requirements. Current configuration values are extracted, misconfigurations are detected with automated, rule-based analyses, configurations that could be further optimised are flagged and implemented with the help of a Lobster specialist for enhanced operational stability.



Lobster_data Configuration Check Results (acc: www.v4.azg)

Date/Time: 2023-06-14 09:30:16, v4.2020 | Data Version: v4.1 Check Level: 4

Customer: ACME-42 Corp. | Project: General Config Check LB-4.1

Param-List Ver.: PL-v0.8.15_0003 | Rule-List Ver.: RL-v0.8.15_0018

Parameter Name (Key)	File Read Errors only	Path/Filename	Version (from - to)	Node Type Group	Val	AC	WT	NC	WN	DMZ	DT	BY	ED	WD	MD
STUP_ShutdownApplication_exists - [py_STUP_ShutdownApplication_exists]		.JetoStartup.xml	v4.0 - v4.6	ALLinner	1M	✓									
STUP_setMailSettings_Server_smtps - [py_STUP_setMailSettings_Server_smtps]		.JetoStartup.xml	v4.0 - v4.6	ALLinner	1M	✓									
STUP_setMailSettings_Server - [py_STUP_setMailSettings_Server]		.JetoStartup.xml	v4.0 - v4.6	ALLinner	1M	✓									
STUP_setMailSettings_Port - [py_STUP_setMailSettings_Port]		.JetoStartup.xml	v4.0 - v4.6	ALLinner	1M	✗									
STUP_setMailSettings_User - [py_STUP_setMailSettings_User]		.JetoStartup.xml	v4.0 - v4.6	ALLinner	1M	✓									
STUP_setMailSettings_Password - [py_STUP_setMailSettings_Password]		.JetoStartup.xml	v4.0 - v4.6	ALLinner	1M	✓									
STUP_setMailSettings_sMTAuthMechanisms - [py_STUP_setMailSettings_sMTAuthMechanisms]		.JetoStartup.xml	v4.0 - v4.6	ALLinner	1M	✓									
STUP_stopServer - [py_STUP_stopServer]		.JetoStartup.xml	v4.0 - v4.6	ALLinner	1M	✓									
STUP_denySystemCall - [py_STUP_denySystemCall]		.JetoStartup.xml	v3.5.4 - v4.6	ALLinner	1M	✓									
STUP_disableCronProfiles - [py_STUP_disableCronProfiles]		.JetoStartup.xml	v4.0 - v4.6	ALLinner	1M	✓									
STUP_forceSSL - [py_STUP_forceSSL]		.JetoStartup.xml	v4.0 - v4.6	ALLinner	1M	✓									
STUP_forceDigestAuthentication - [py_STUP_forceDigestAuthentication]		.JetoStartup.xml	v4.0 - v4.6	ALLinner	1M	✓									
STUP_documentationUrl - [py_STUP_documentationUrl]		.JetoStartup.xml	v4.0 - v4.6	ALLinner	1M	✓									
STUP_minPasswordLength - [py_STUP_minPasswordLength]		.JetoStartup.xml	v4.0 - v4.6	ALLinner	1M	✓									
STUP_setAdminUIParams_bool - [py_STUP_setAdminUIParams_bool]		.JetoStartup.xml	v4.0 - v4.6	ALLinner	1M	✓									
STUP_setAdminUIParams_port - [py_STUP_setAdminUIParams_port]		.JetoStartup.xml	v4.0 - v4.6	ALLinner	1M	✓									
STUP_disableOldProfileOptions - [py_STUP_disableOldProfileOptions]		.JetoStartup.xml	v4.0 - v4.6	ALLinner	1M	✓									
STUP_disableDeprecatedClasses - [py_STUP_disableDeprecatedClasses]		.JetoStartup.xml	v4.0 - v4.6	ALLinner	1M	✓									
STUP_backupDir - [py_STUP_backupDir]		.JetoStartup.xml	v4.0 - v4.6	ALLinner	1M	✓									
STUP_retainDays - [py_STUP_retainDays]		.JetoStartup.xml	v4.0 - v4.6	ALLinner	1M	✓									
STUP_retainDaysLog - [py_STUP_retainDaysLog]		.JetoStartup.xml	v4.0 - v4.6	ALLinner	1M	✓									
STUP_remarkForDeletionRequired - [py_STUP_remarkForDeletionRequired]		.JetoStartup.xml	v4.0 - v4.6	ALLinner	1M	✓									
STUP_remarkForSaveRequired - [py_STUP_remarkForSaveRequired]		.JetoStartup.xml	v4.0 - v4.6	ALLinner	1M	✓									
STUP_resetTransportProfileFlag - [py_STUP_resetTransportProfileFlag]		.JetoStartup.xml	v4.0 - v4.6	ALLinner	1M	✓									
STUP_dashBoardAccessToken - [py_STUP_dashBoardAccessToken]		.JetoStartup.xml	v4.0 - v4.6	ALLinner	1M	✓									
STUP_enableMountManager - [py_STUP_enableMountManager]		.JetoStartup.xml	v4.0 - v4.6	ALLinner	1M	✓									
STUP_internalStatisticRetainDays - [py_STUP_internalStatisticRetainDays]		.JetoStartup.xml	v4.0 - v4.6	ALLinner	1M	✓									
STUP_setLongTimeArchive_days - [py_STUP_setLongTimeArchive_days]		.JetoStartup.xml	v4.0 - v4.6	ALLinner	1M	✓									
STUP_setLongTimeArchive_daysTTL - [py_STUP_setLongTimeArchive_daysTTL]		.JetoStartup.xml	v4.0 - v4.6	ALLinner	1M	✓									
STUP_ignoreDMZSettings - [py_STUP_ignoreDMZSettings]		.JetoStartup.xml	v4.0 - v4.6	ALLinner	1M	✓									
STUP_strictClientHandling - [py_STUP_strictClientHandling]		.JetoStartup.xml	v4.0 - v4.6	ALLinner	1M	✓									
STUP_alias - [py_STUP_alias]		.JetoStartup.xml	v4.0 - v4.6	ALLinner	1M	✓									
STUP_maxRetries - [py_STUP_maxRetries]		.JetoStartup.xml	v4.0 - v4.6	ALLinner	1M	✓									
STUP_retryInterval - [py_STUP_retryInterval]		.JetoStartup.xml	v4.0 - v4.6	ALLinner	1M	✓									
STUP_restoreWaitTime - [py_STUP_restoreWaitTime]		.JetoStartup.xml	v4.0 - v4.6	ALLinner	1M	✓									
STUP_ignoreOldCrashedJobs - [py_STUP_ignoreOldCrashedJobs]		.JetoStartup.xml	v4.0 - v4.6	ALLinner	1M	✓									
STUP_maxBackgroundThreads - [py_STUP_maxBackgroundThreads]		.JetoStartup.xml	v4.0 - v4.6	ALLinner	1M	✓									
STUP_veryLowThreads - [py_STUP_veryLowThreads]		.JetoStartup.xml	v4.0 - v4.6	ALLinner	1M	✓									
STUP_lowThreads - [py_STUP_lowThreads]		.JetoStartup.xml	v4.0 - v4.6	ALLinner	1M	✓									
STUP_higherThreads - [py_STUP_higherThreads]		.JetoStartup.xml	v4.0 - v4.6	ALLinner	1M	✓									
STUP_highPriorityThreads - [py_STUP_highPriorityThreads]		.JetoStartup.xml	v4.0 - v4.6	ALLinner	1M	✓									

Screenshot:
Comparing a HTML export to a load balance set-up with 1 node controller (NC), 4 working nodes (WN) and 2 DMZs.

HOW IT WORKS.

The Configuration Check collates all the Lobster_data configuration information for an entire installation environment (split into test and production systems) – including any DMZs and working nodes. Next, the service checks the given configuration parameters for consistency and plausibility. Every individual parameter value is compared to a predefined set of rules, taking the respective context into account. To validate the configuration, values, formats, defined guidelines, dependencies and specific rules are all checked.

The results of this analysis are exported and visualised in a compact HTML overview, including a detailed table of all errors, warnings and general notes on each individual configuration parameter. Finding individual parameters is simple and straightforward thanks to the sort and search feature, saving you valuable time.

THESE VALIDATIONS ARE CHECKED.

✓ Parameter verification

Check whether the required parameters have been added and include valid values. Ensure all system-relevant information is available.

✓ Syntax verification

Check whether the syntax of the configured values has the expected format: e.g. IP addresses, URLs and email addresses.

✓ Dependency verification

Check whether the configuration of dependent elements is uniform.

✓ Value range verification

Check whether the configured values fall within the defined value range e.g.: check numerical values, intervals and limits.

✓ Uniformity verification

Check for any contradictory settings which could cause unexpected behaviours.

✓ Security verification

Check whether the configured security settings align with the relevant guidelines and best practice: e.g. for passwords, access rights and encryption settings.

✓ Plausibility verification

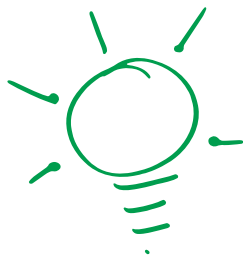
Check whether the values are plausible and as expected: e.g. check standards, size limitations and conventions.

✓ Version compatibility

Check whether the settings are compatible with the system version.

Parameter Name (Key)	File Read Errors only:	Path/Filename	Version (from - to)	Node Type Group	ST	MC	MM	DMZ	SEC	VAL	AT	VT	NA	MD	DF	RV	ER	WR	HR
MC: <input type="text" value="enter search text here ..."/>	<input type="text" value="none"/>	<input type="text" value="all"/>																	
# of rows found: 000004																			
STUP_startCronJobProfiles - [ky_STUP_startCronJobProfiles]		/etc/startup.xml	v4.1 - v4.6	ALLinnerLB						1 NA									
STDZ_otherDMZ - [ky_STDZ_otherDMZ]		/etc/startup_dmz.xml	v4.0 - v4.6	DMZs						1 NA									
If there is more than one dmz running, define the others here																			
DMZ_2	10.99.133.18	WRONG-TYPE	NOT-ALLOWED	-NotMand-															
OFTP_addSCXHandlerSettings_name - [ky_OFTP_addSCXHandlerSettings_name]		/etc/oftp.xml	v4.0 - v4.6	WN						1 NA									
OFTP_addSCXHandlerSettings_url - [ky_OFTP_addSCXHandlerSettings_url]		/etc/oftp.xml	v4.0 - v4.6	WN						1 NA									

More information on error detection



THE ADVANTAGES.

As an optional service for our data integration software Lobster_data, the Configuration Check offers the following benefits:

- ✓ System-wide validation of all configuration files
- ✓ Early detection of vulnerabilities in configurations
- ✓ Visualised & documented export of analysis results
- ✓ First step towards a structured error resolution process
- ✓ Perfect foundation for ensuring your timely Repair Service

REPAIR SERVICE.

Lobster offers an on-demand Repair Service in addition to the Configuration Check: our experts go through your Check results and explain each recommended optimisation in detail before correcting any misconfigurations. Of course, the results of each individual system can vary greatly in terms of scope and complexity. But although we tailor our Repair Services to each business's individual needs, the benefit of the Configuration Check with added Repair Service is identical for all organisations: operational stability through clean configuration data.

Lobster DATA GmbH
Bräuhäusstraße 1
82327 Tutzing
T: +49 8158 4529 300
information@lobster.de
lobster-world.com



Lobster